

# Analogue Sensors and Devices for Taktis and Syncro AS Panels

## ALK-ASN



### Product Overview

**A Photoelectric Smoke Sensor** incorporating Hochiki's unique High Performance Chamber, allows the sensor threshold level to be increased, improving the signal to noise ratio and reducing susceptibility to false alarms.

### Standard Features

- High Performance Chamber
- Twin fire LEDs allow 360° viewing
- Locking mechanism (sensor to base)
- Variable sensitivity
- Electronically addressed
- Compatible Bases: YBN-R/3(WHT), YBO-BS(WHT), YBO-BSB(WHT), YBN-R/3-R/SCI
- Approval: AS7240.7

## ACA-ASN



### Product Overview

**A Multi-Sensor** incorporating a thermal element and a High Performance photoelectric Smoke Chamber. Has three modes controlled from the Control Panel, allowing either the optical or thermal element or both to be active in making the fire decision.

### Standard Features

- High Performance chamber
- User selectable modes
- Incorporates optical and heat elements
- Twin fire LEDs allow 360° viewing
- Pulsing/non-pulsing controlled from panel
- Variable sensitivity
- Electronically addressed
- Compatible Bases: YBN-R/3(WHT), YBO-BS(WHT), YBO-BSB(WHT), YBN-R/3-R/SCI
- Approvals: AS7240.5 and AS7240.7

## ACB-ASN



### Product Overview

**A Multi-Heat Sensor** incorporating a variable Fixed Temperature heat element and a Rate Of Rise heat element, both controlled from the Control Panel allowing either thermal element or both elements simultaneously to be active in making the fire decision.

### Standard Features

- User selectable modes
- Incorporates Fixed Temperature and Rate of Rise Heat elements
- Twin fire LEDs allow 360° viewing
- Pulsing/non-pulsing controlled from panel
- Electronically Addressed
- Compatible Bases: YBN-R/3(WHT), YBO-BS(WHT), YBO-BSB(WHT), YBN-R/3-R/SCI
- AS7240.5 Classes A1, B and C

## ACB-ASNW



### Product Overview

**An IP67 Rated Waterproof Multi-Heat Sensor** which can be used externally and is supplied with its own fixing base which is used to fix the sensor. Flying leads from the sensor connect directly to the loop via waterproof connectors.

### Standard Features

- User selectable modes
- Incorporates fixed temperature and rate of rise heat elements
- Twin fire LEDs allow 360° viewing
- Pulsing/non-pulsing controlled from panel
- Electronically addressed
- IP67 rated
- Supplied with fixing base
- AS7240.5 Classes A1, B and C

## YBN-R/3(WHT)



### Product Overview

**A Common Mounting Base** which is fully compatible with ALK-ASN, ACA-ASN and ACB-ASN sensors. Supplied with square cable clamps for secure and reliable cable termination and is also capable of driving a remote LED if required.

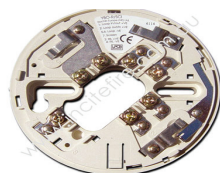
(Red version – YBO-R/3(RED) for use with CHQ-WS2 Wall Sounder and CHQ-WSB Wall Sounder Beacon)



### Standard Features

- Electronics free
- Stainless steel contacts
- Takes 2.5mm<sup>2</sup> cables
- Slim profile – only 8mm
- Rugged wiring contacts
- Facility for remote indicator
- Quick connection via square cable clamps
- Available in RED for use with CHQ-WS2 Wall Sounder and CHQ-WSB Wall Sounder Beacon

## YBO-R/SCI(WHT) Product Overview



**A Loop Isolator Base** which is fully compatible with Hochiki analogue Sensors, Beacons, Sounders and Indicators. The unit incorporates an amber LED to show when it is isolating a section of the loop. (Red version – YBO-R/SCI(RED) for use with CHQ-WS2 Wall Sounder & CHQ-WSB Wall Sounder Beacon) or thermal element or both to be active in making the fire decision.



### Standard Features

- Detects short circuits on loop
- Status LED
- Connection of up to 127 per loop
- Quick connection via square cable clamps
- Available as a DIN Rail Module
- Available in RED for use with CHQ-WS2 Wall Sounder & CHQ-WSB Wall Sounder Beacon

## CHQ-WS2



### Product Overview

**An Addressable Loop-Powered Wall Sounder** providing 8 volume levels and 51 tones with a maximum output of up to 102 dB(A) (±2dB(A)) with low current consumption.

Special bases available: YBO-R/3(RED), YBO-R/SCI(RED), YBO-R/3(WHT) and YBO-R/SCI(WHT-SNDR).



### Standard Features

- Loop powered
- Single loop address – addressed via the TCH-B100 hand held programmer
- Variable sound output 90 ~ 102 dB(A) (±2 dB(A)) output at 1m
- Fits Hochiki standard or isolator base
- Weatherproof kit available
- 51 User-selectable tones (all tones EN54-3 compatible)
- Auto-shutdown mode available\*
- \* Please ensure control panel compatibility

## CHQ-WSB



### Product Overview

**An Addressable Loop-Powered Wall Sounder Beacon** as per the CHQ-WS2 but additionally featuring an integral beacon within the horn which utilises high intensity LED technology.

Special bases available: YBO-R/3(RED), YBO-R/SCI(RED), YBO-R/3(WHT) and YBO-R/SCI(WHT-SNDR).



### Standard Features

- As per CHQ-WS2 plus:
- Variable flash frequency\*
  - High intensity LED technology
  - Independent control of sounder and beacon\*
  - Auto-shutdown mode available – can be set independently for sounder or beacon\*
  - \* Please ensure control panel compatibility

## WS2-WPK



### Product Overview

A **Weatherproof Back Box** and gasket set for the CHQ-WS2 Wall Sounder and the CHQ-WSB Wall Sounder Beacon, increases the IP Rating of the Sounder to IP65 for external use.

### Standard Features

- Designed for CHQ-WS2 and CHQ-WSB
- Increases sounder IP rating from IP21 to IP65 (external use)
- Easy to install

## YBO-BS(WHT)



### Product Overview

An **Addressable Loop-Powered Base Sounder Beacon**, providing 13 volume levels and 51 tones with a maximum output of up to 98 dB(A) ( $\pm 2$ dB(A)) with low current consumption. The unit is designed to fit either the YBN-R/3 or the YBO-R/SCI\* Bases.

(\*From batch number 6044)

### Standard Features

- Loop powered
- Single loop address – addressed automatically by control panel or via the TCH-B100 hand held programmer
- 50 – 98 dB(A) (+2dB(A)) output at 1m
- Fits Hochiki standard or isolator base and supports ESP sensors, beacons and remote indicator
- 51 User-selectable tones (all tones EN54-3 compatible)



## YBO-BSB(WHT)



### Product Overview

An **Addressable Loop-Powered Base Sounder Beacon**, providing 13 volume levels and 51 tones with a maximum output of up to 98 dB(A) ( $\pm 2$ dB(A)) with low current consumption. The unit is designed to fit either the YBN-R/3 or the YBO-R/SCI\* Bases.

(\*From batch number 6044)

### Standard Features

- Loop powered
- Single loop address, addressed by either Control Panel or TCH-B100
- 50 – 98dB(A) ( $\pm 2$ dB(A)) output at 1m
- Fits Hochiki standard or isolator base and supports ESP sensors, beacons and remote indicator
- 51 User-selectable tones (all tones EN54-3 compatible)
- Beacon and sounder can be controlled



## CHQ-AB(WHT)



### Product Overview

An **Addressable Loop-Powered Beacon**, with high-intensity LEDs and a Fresnel lens design which produces a highly visible flash. The casing exactly matches the Hochiki Analogue Sensor range in shape and colour providing seamless integration.

### Standard Features

- High Intensity LED technology
- 1 Hz flash frequency
- Addressable via TCH-B100
- Up to 127 devices per loop
- Choice of 3 lens colours (red, amber and blue)



## CHQ-ARI(WHT)



### Product Overview

**An Addressable Loop-Powered Remote Indicator**, with high-intensity LEDs and a Fresnel lens design which produces a highly visible signal. The casing exactly matches the Hochiki Analogue Sensor range in shape and colour providing seamless integration. The unit also features two monitored inputs.

### Standard Features

- High Intensity LED technology
- Addressable via TCH-B100
- Up to 127 devices per loop

## CHQ-POM



### Product Overview

**A Powered Output Module** designed to supply a nominal 24 V dc at various, user-selectable current levels from 2 to 32 mA (in increments of 2mA). The unit is small enough to be added to other third-party devices thereby allowing a range of equipment to be added to the Analogue loop.

The unit also features two monitored inputs.

### Standard Features

- Supplies a nominal 24 V dc at various current levels, 2 mA to 32 mA in increments of 2 mA
- User-selectable current output
- Includes two monitored inputs
- Small design, provides simple connectivity to Analogue loop for third-party devices,
- Colour-coded flying leads for simple installation
- Addressed with TCH-B100 Hand Held Programmer

## CHQ-SIM



### Product Overview

A Single Input Module designed to allow a single monitored input to be connected to the Analogue loop. This provides a compact, low-cost option where the installation of the larger CHQ 'Smart-Fix' Range of Modules might be difficult.

### Standard Features

- Includes a single monitored input
- Small design for simple provision of a monitored input onto an analogue loop
- Flying leads for easy installation
- Addressed with TCH-B100 Hand Held Programmer
- \* Please ensure control panel compatibility

## CHQ-DIM(SCI)



### Product Overview

A Dual Input Module designed to interface to a variety of inputs such as door contacts, sprinkler flow/door switches and plant equipment. Also available as a DIN Rail mountable version. Both models feature an integral short-circuit isolator.

### Standard Features

- Loop powered
- Single loop address
- Two independent inputs for monitoring of volt-free contacts
- Each input can be configured to monitor either normally open or normally closed contacts
- DIN rail version available
- Both models feature an integral short-circuit isolator

## CHQ-DRC(SCI)



### Product Overview

**A Dual Relay Controller** designed to provide two general-purpose relay outputs, each output can be controlled independently and used to control dampers, plant and equipment shutdown. The monitored input can be used for local power supply fault monitoring or as a general-purpose input. Also available as a DIN Rail mountable version.

Both models feature an integral short-circuit isolator.

### Standard Features

- Loop powered
- Single loop address
- Two independently controlled changeover relays
- Relays contact rated at 30Vd.c. at 1 amp
- Auxiliary monitored input
- DIN rail version available
- Both models feature an integral short-circuit isolator

## CHQ-DZM(SCI)



### Product Overview

**A Dual Zone Module** designed to allow up to 60 conventional detectors (30 per zone) to be interfaced to Hochiki's Analogue addressable system. Also available as a DIN Rail mountable version. Both models feature an integral short-circuit isolator.

### Standard Features

- Single loop address
- Supports two independent zones of conventional detectors
- Both zones fully monitored for Short/ Open Circuit
- Requires an auxiliary 24Vd.c. supply
- DIN rail version available
- Both models feature an integral short-circuit isolator

## CHQ-DSC(SCI)



### Product Overview

**A Dual Sounder Controller**, which has been designed to provide two sounder outputs (that can be driven separately) with full fault monitoring. The monitored input can be used for local power supply fault monitoring or as a general-purpose input. Features an integral short-circuit isolator.

### Standard Features

- Single loop address
- Two independent sounder circuits
- Each circuit fully monitored for Open and Short Circuit faults
- Each alarm circuit fused at 1 amp
- Auxiliary monitored Input
- Outputs are synchronised and can be driven continuously or intermittently
- 24Vd.c. auxiliary power required
- Features an integral short-circuit isolator

## CHQ-SZM(SCI)



### Product Overview

A **Single Zone Monitor** designed to allow up to 6 conventional detectors to be interfaced to Hochiki's analogue addressable system. Also available as a DIN Rail mountable version. Both models feature an integral short-circuit isolator.

### Standard Features

- Loop powered
- Up to 6 Conventional Detectors
- Single loop address
- Remote LED output
- Fully monitored for Short and Open Circuit faults
- DIN rail version available
- Both models feature an integral shortcircuit isolator

## HCP-E-ADD



### Product Overview

**Loop driven addressable manual call point**

### Standard Features

- Fast Response
- Status LED
- Addressed using Handheld Programmer
- Complete with back box

## HCP-E-ADD-WP



### Product Overview

**Loop driven weatherproof addressable manual call point**

### Standard Features

- Fast Response
- Status LED
- Addressed using Handheld Programmer
- Complete with back box
- IP rated IP67

## SYNCRO AAF



### Product Overview

**Alarm Acknowledgement Facility.** Used to allow local alarm investigation prior to signalling full alarm outputs.

### Standard Features

Fully compatible with the Syncro AS range

- Meets AS7240.2 requirements
- Acknowledge time settings 30 or 60 seconds
- Investigate time between 30 to 180sec in 30 sec intervals
- Button to acknowledge false alarm
- Loop powered - no external power required
- Fits standard Australian mounting block

## TCH-100



### Product Overview

**A hand held address programmer** designed to address the range of detectors and other addressable devices such as the YBO-BS(WHT) Base Sounder. Designed to be light, robust and easy to use it operates from a single PP3 size 9v battery which can provide up to 8000 operations.

### Standard Features

- Lightweight design
- Quick and reliable addressing
- Up to 8000 address settings from one battery
- Displays sensor analogue value ( shown with sensor fitted – not supplied)

## CHQ-BACKBOX



### Product Overview

**The CHQ-BACKBOX** is designed for installations where the CHQ Range of Modules - CHQ-DIM(SCI), CHQ-SZM(SCI), CHQ-DZM(SCI), CHQ-DSC(SCI), CHQ-MRC(SCI), CHQ-DRC(SCI) and CHQ-PCM - require mounting within a glanded enclosure.

### Standard Features

- Provides Glanded Cable Connections
- Robust Design
- Compatible With All CHQ Modules

## CHQ-ADAPTOR



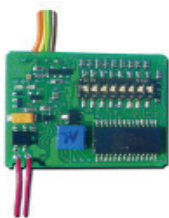
### Product Overview

**The CHQ-ADAPTOR** is designed to allow the "Smart-Fix" range of CHQ Modules to be housed in existing enclosures originally designed for the first generation CHQ-OEM Modules by modifying the 'footprint' of the unit.

### Standard Features

- Allows The PCB Component Of A CHQ Module To Be Housed In An Enclosure
- Footprint Matches Older Enclosure Sizes

## CHQ-CP



### Product Overview

Clean Contact Input Module

### Standard Features

- Non monitored general input module
- Loop powered
- Low standby current 230.0µA typical
- Addressed using DIP switches

## SMB-1



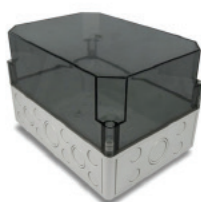
### Product Overview

An IP66 rated, grey (RAL7035) enclosure designed for use with the Hochiki range of Modules. Supplied with a transparent black lid as standard. Used in conjunction with the SMB-ADAPTOR this enclosure can house any of the PCB assemblies from the Hochiki Smart-Fix Module range

### Standard Features

- Quick-release screws
- Polyurethane gasket provides IP66 protection
- Corrosion free, resistant to most alkaline and acid
- Temperature resistance to +70°C, Impact resistant, and Nonflammable
- 32 knock-outs
- \* Dimensions L 254 x W 180 x H 90

## SMB-2



### Product Overview

An IP66 rated, grey (RAL7035) enclosure designed for use with the Hochiki range of DIN Modules. Supplied with a transparent black lid as standard. The unit is supplied with a DIN Rail section (plus fixings) and will accept up to six Hochiki DIN Rail Modules, side-by-side.

### Standard Features

- Designed to house up to 6 Hochiki DIN Modules
- Quick-release screws
- Polyurethane gasket provides IP66 protection
- Corrosion free, resistant to most alkaline and acid
- Temperature resistance to +70°C
- Impact resistant, and Nonflammable
- 32 knock-outs
- Supplied with DIN Rail and fixings
- \* Dimensions L 254 x W 180 x H 160

## SMB-3



### Product Overview

An IP66 rated, grey (RAL7035) enclosure designed for use with the Hochiki range of DIN Modules. Supplied with a transparent black lid as standard. The unit is supplied with a DIN Rail section (plus fixings) and will accept up to four Hochiki DIN Rail Modules, side-by-side.

### Standard Features

- Designed to house up to 4 Hochiki DIN Modules
- Quick-release screws
- Polyurethane gasket provides IP66 protection
- Corrosion free, resistant to most alkaline and acid
- Temperature resistance to +70°C
- Impact resistant, and Nonflammable
- 20 knock-outs
- Supplied with DIN Rail and fixings
- \* Dimensions L 180 x W 110 x H 165



## SBB-1



### Product Overview

**Splashproof Base Backbox.** Provides an aesthetically pleasing solution where surface fixed devices are required. The housing supports four 20mm glanded entries for cabling access.

### Standard Features

- 4 ganded cable entry holes (glands not supplied)
- Colour matched
- Approved detector and base range
- Provides moisture and dust resistant fitting
- Ideal for bulk head fitting
- Suitable for marine use

## YBO-BS-COV(W)



### Product Overview

**Protective Cap.** A protective cap which can be fitted to the YBO-R/SCI(WHT) isolator base, YBO-BS(WHT) or YBO-BSB(WHT) sounder bases when these devices are being used without a detector fitted.

### Standard Features

- Protects wiring terminals on isolator bases and base sounders
- Easy to fit
- Available in ivory or white

## DH-98-ASA



### Product Overview

**A Duct Probe Housing** associated with analogue ALK-ASN detectors and to be mounted on the outside of an air duct for the purpose of monitoring the air within the duct. (shown with sensor fitted – not supplied). Allows air duct sampling using standard detector or sensor.

### Standard Features

- \* Test hole on cover. Simple installation/maintenance. Sensitive flow indication Installer-friendly connection of cables.